

HIGH PRESSURE HYDRAULIC TOOLS

BMDX SERIES HIGH TONNAGE DOUBLE ACTING CYLINDER

CAPACITY: 50-1000T
 MAX. PRESSURE: 700 Bar
 HYDRAULIC RETURN

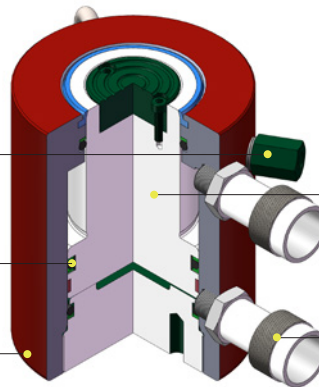


The BMDX double acting high tonnage industrial cylinders is specifically designed for lifting and maintenance applications. All models are supplied with a tilting saddle to reduce the risk of damage caused by side loading and an integral stop ring for stroke limitation is fitted as standard. Standard range models are featured in this catalogue, however additional capacities and stroke options are available on request.

Safety valve release pressure when the cylinder is overload

Industrial U-cup style seal prevents costly leaks

High strength alloy steel body is precision machined to reduce wear and features a baked enamel finish for durability and corrosion protection

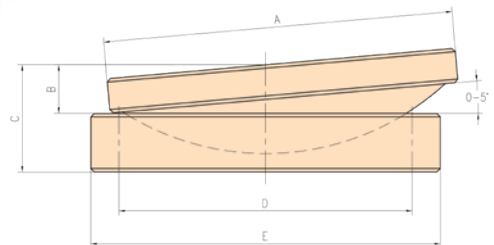


Hardened and chromed piston reduces wear and corrosion

Standard coupler provided with dust cover

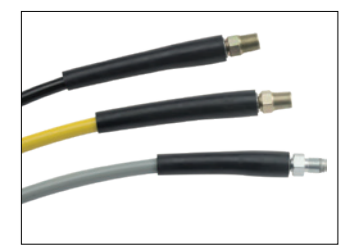
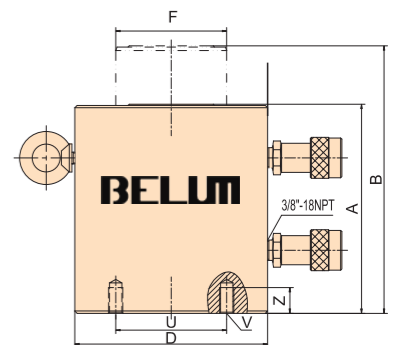
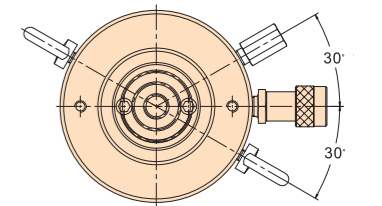
Tile Saddle Selection

Cylinder Model	Saddle Model	Saddle Size				
		A mm	B mm	C mm	D mm	E mm
BMSX-50T / BMDX-50T	STX-50	49	24	43	39	49
BMSX-100T / BMDX-100T	STX-100	73	29	48	55	74
BMSX-150T / BMDX-150T	STX-150	91	31	50	74	94
BMSX-200T / BMDX-200T	STX-200	118	35	59	90	113
BMSX-250T / BMDX-250T	STX-250	144	46	70	120	145
BMSX-300T / BMDX-300T	STX-300	158	62	81	150	177
BMSX-400T / BMDX-400T	STX-400	193	51	78	170	196
BMSX-500T / BMDX-500T	STX-500	228	63	90	200	228
BMSX-600T / BMDX-600T	STX-600	241	76	103	220	247
BMSX-800T / BMDX-800T	STX-800	297	75	102	260	297
BMSX-1000T / BMDX-1000T	STX-1000	311	93	120	295	323



Model	Capacity @10,000 PSI (700 bar)	Stroke	Max. Capacity		Effective Area		Oil Capacity		Closed Height	Extended Height
			Push	Pull	Push	Pull	Push	Pull		
			Metric Ton	mm	Ton	Ton	cm ²	cm ²	cm ³	cm ³
BMDX-502	50	50	53	26	75.4	36.9	377	185	162	212
BMDX-504		100	53	26	75.4	36.9	754	369	212	312
BMDX-506		150	53	26	75.4	36.9	1131	554	262	412
BMDX-508		200	53	26	75.4	36.9	1508	738	312	512
BMDX-5010		250	53	26	75.4	36.9	1885	923	362	612
BMDX-5012		300	53	26	75.4	36.9	2262	1107	412	712
BMDX-1002	100	50	93	43	132.7	61.9	664	309	179	229
BMDX-1004		100	93	43	132.7	61.9	1327	619	229	329
BMDX-1006		150	93	43	132.7	61.9	1991	928	279	429
BMDX-1008		200	93	43	132.7	61.9	2655	1237	329	529
BMDX-10010		250	93	43	132.7	61.9	3318	1546	379	629
BMDX-10012		300	93	43	132.7	61.9	3982	1856	429	729
BMDX-1502	150	50	140	68	201	97.1	1005	486	196	246
BMDX-1504		100	140	68	201	97.1	2010	971	246	346
BMDX-1506		150	140	68	201	97.1	3015	1457	296	446
BMDX-1508		200	140	68	201	97.1	4020	1942	346	546
BMDX-15010		250	140	68	201	97.1	5025	2428	396	646
BMDX-15012		300	140	68	201	97.1	6030	2913	446	746
BMDX-2002	200	50	185	88	268.7	125.6	1344	628	212	262
BMDX-2006		150	185	88	268.7	125.6	4031	1884	312	462
BMDX-20012		300	185	88	268.7	125.6	8061	3768	462	762
BMDX-2502	250	50	254	105	362.9	149.2	1815	736	235	285
BMDX-2506		150	254	105	362.9	149.2	5444	2289	335	485
BMDX-25012		300	254	105	362.9	149.2	10887	4578	485	785
BMDX-3002	300	50	316	108	452.2	153.7	2261	769	322	372
BMDX-3006		150	316	108	452.2	153.7	6783	2306	422	572
BMDX-30012		300	316	108	452.2	153.7	13566	4611	572	872
BMDX-4002	400	50	386	132	572	188.4	2860	1055	374	424
BMDX-4006		150	386	132	572	188.4	7580	3165	474	624
BMDX-40012		300	386	132	572	188.4	15160	6330	624	924
BMDX-5002	500	50	511	168	730.2	239.6	3651	1198	419	469
BMDX-5006		150	511	168	730.2	239.6	10953	3594	519	669
BMDX-50012		300	511	168	730.2	239.6	21906	7188	669	969
BMDX-6002	600	50	599	213	854.9	303.6	4275	1518	429	479
BMDX-6006		150	599	213	854.9	303.6	12824	4554	529	679
BMDX-60012		300	599	213	854.9	303.6	25647	9108	679	979
BMDX-8002	800	50	815	252	1163.6	384.7	5818	1924	484	534
BMDX-8006		150	815	252	1163.6	384.7	17454	5771	584	734
BMDX-80012		300	815	252	1163.6	384.7	34908	11541	734	1034
BMDX-10002	1000	50	1017	362	1451.5	517.1	7258	2586	564	614
BMDX-10006		150	1017	362	1451.5	517.1	21773	7757	664	814
BMDX-100012		300	1017	362	1451.5	517.1	43545	15513	814	1114

Outside Diam.	Piston Diam.	Base Mounting Hole Size			Weight	Model
		Bolt Circle	Thread Size	Thread Depth		
		D mm	F mm	U mm	V mm	Z mm
129	70	65	2 x M12	12	17	BMDX-502
129	70	65	2 x M12	12	19.5	BMDX-504
129	70	65	2 x M12	12	22	BMDX-506
129	70	65	2 x M12	12	25.5	BMDX-508
129	70	65	2 x M12	12	29	BMDX-5010
129	70	65	2 x M12	12	31.5	BMDX-5012
165	95	95	2 x M12	12	29	BMDX-1002
165	95	95	2 x M12	12	34	BMDX-1004
165	95	95	2 x M12	12	40	BMDX-1006
165	95	95	2 x M12	12	46	BMDX-1008
165	95	95	2 x M12	12	53	BMDX-10010
165	95	95	2 x M12	12	79	BMDX-10012
205	115	130	2 x M12	12	39	BMDX-1502
205	115	130	2 x M12	12	52	BMDX-1504
205	115	130	2 x M12	12	65	BMDX-1506
205	115	130	2 x M12	12	78	BMDX-1508
205	115	130	2 x M12	12	92	BMDX-15010
205	115	130	2 x M12	12	105	BMDX-15012
235	135	165	3 x M12	12	55	BMDX-2002
235	135	165	3 x M12	12	91	BMDX-2006
235	135	165	3 x M12	12	146	BMDX-20012
275	165	190	3 x M12	12	89	BMDX-2502
275	165	190	3 x M16	12	136	BMDX-2506
275	165	190	3 x M16	12	207	BMDX-25012
310	200	180	3 x M16	30	184	BMDX-3002
310	200	180	3 x M16	30	232	BMDX-3006
310	200	180	3 x M16	30	303	BMDX-30012
350	215	205	3 x M16	30	270	BMDX-4002
350	215	205	3 x M16	30	330	BMDX-4006
350	215	205	3 x M16	30	421	BMDX-40012
400	250	250	3 x M24	30	410	BMDX-5002
400	250	250	3 x M24	30	480	BMDX-5006
400	250	250	3 x M24	30	559	BMDX-50012
430	265	275	3 x M24	36	474	BMDX-6002
430	265	275	3 x M24	36	565	BMDX-6006
430	265	275	3 x M24	36	710	BMDX-60012
505	320	330	3 x M24	36	741	BMDX-8002
505	320	330	3 x M24	36	868	BMDX-8006
505	320	330	3 x M24	36	1058	BMDX-80012
560	345	375	3 x M24	36	1062	BMDX-10002
560	345	375	3 x M24	36	1213	BMDX-10006
560	345	375	3 x M24	36	1439	BMDX-100012



Hose



Check Valve



Gauge

Safety Practices
Good industry practice recommends not exceeding 80% of the max. rated capacity.